

► WIRELESS AUTOMATION

TWIG

HOW TO ORDER:

STEP 1 – CONTROLLER + HUB

- ▶ Select power option. (Order solar power kit if necessary.)
- ▶ Order antenna kit.

STEP 2 – TWIG® RADIO MODULES

- ▶ Specify internal or external antennas.
- ▶ Specify how many valves each TWIG® will control (1 or 2).

STEP 3 – REPEATER

If necessary to extend the range of the radio network.

- ▶ Select power option. (Order solar power kit if necessary.)
- ▶ Order antenna kit.



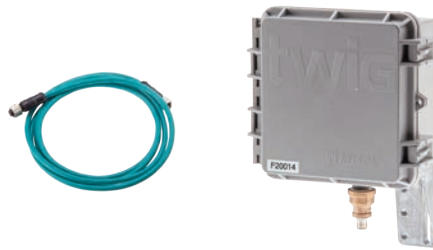
TWIG® Wireless Control products available in select countries. Go to TWIG FAQ at nelsonirrigation.com. Available to select dealers. Contact the factory for purchasing terms and conditions.



▶ TWIG® CONTROLLER

Model	PartNumber	Description
TWIG-MC, 110VAC	12957-001	Master Controller - 110VAC.
TWIG-MC, 12VDC	12957-003	Master Controller - 12VDC. Order solar kit separately. See page 22.
TWIG-V HUB	13206	Manages TWIG-V network, connects to TWIG-MC using included cable.*
TWIG HUB	13207	Manages legacy TWIG network, connects to TWIG-MC using included cable.*

*Order Antenna Kit separately.



TWIG Hub



TWIG-MC

- » Full mobile control using iOS or Android App over Bluetooth
- » No subscriptions
- » Internet ready (user provided connection or cell modem)
- » 2 pressure sensor inputs
- » Flow meter input
- » 2 pump start contacts
- » Backwards compatible with legacy TWIGs using the TWIG Hub.



TWIG-V Hub

Hub

- » Manages the radio network; use TWIG-V Hub for TWIG-V devices, and/or TWIG Hub for first generation devices.
- » Connects to MC controller using included cable.
- » Order antenna kit separately.

▶ TWIG® RADIO MODULE

Model	PartNumber	Description
TWIG-V 1i	13457-001	Internal Antenna, w/bracket. Operates one valve
TWIG-V 2i	13457-002	Internal Antenna, w/bracket. Operates up to two valves, independently
TWIG-V 1e	13457-011	External Antenna,* w/bracket. Operates one valve
TWIG-V 2e	13457-012	External Antenna,* w/bracket. Operates up to two valves, independently

*Order Antenna Kit separately.



TWIG-V

- » Sealed enclosure
- » Bluetooth setup using the TWIG-V app
- » Fast-response radio network communicates within 3 seconds
- » Low-power design uses off-the shelf D-cell batteries
- » Includes mounting bracket

▶ TWIG® REPEATER

Model	PartNumber	Description
TWIG-V Repeater, AC	12966-001	TWIG-V Repeater - 110VAC power. Order antenna kit separately.
TWIG-V Repeater, DC	12966-002	TWIG-V Repeater - 12VDC power. Order antenna and solar kits separately.



TWIG-V Repeater

- » Extends the radio network by creating "sub-networks" that tie back to the Hub.
- » Facilitates radio communication directly between the Hub and the TWIG-V; cannot communicate to other repeaters.
- » Up to 8 repeaters in a network.

▶ ANTENNAS, SOLAR KITS, RELAYS, PARTS

Antenna Kits For Hubs, Repeaters, External Antenna TWIG® devices

Model	Part Number	Description
Omni w/ 10' cable	12000-010	Multi-directional Omni antenna (6 dBi) with cable assembly, mounting hardware, lightning arrestor*, and coax tape, for connecting antenna to HUB, external antenna TWIG-V, or TWIG-V Repeater.
Omni w/ 20' of cable	12000-020	
Omni w/ 30' of cable	12000-030	
Omni w/ 40' of cable	12000-040	
Omni w/ 50' of cable	12000-050	



*A grounding rod (supplied by others) must be used in conjunction with the lightning arrestor.

Solar Power Kits for TWIG-MC or TWIG-V Repeater



Model	Part Number	Description
Solar Kit for TWIG-MC, with Battery	13438	90 Watt, 12VDC solar kit with mounting hardware for solar panel, battery and charge controller in weather resistant enclosure. For TWIG-MC.
Solar Kit for TWIG® or TWIG-V Repeater, with Battery	12075-002	10 Watt, 12VDC solar kit with mounting hardware for solar panel, battery and charge controller in weather resistant enclosure. For TWIG® or TWIG-V Repeater.

Relay

22

Connect a standard TWIG® or TWIG-V to this relay assembly to start a remote pump or other device by closing a contact at the command of the TWIG-MC.

Model	Part Number	Description
Single Relay	13108-001	One latching relay in a weather resistant enclosure
Dual Relay	13108-002	Two latching relays in a weather resistant enclosure



Replacement Parts

Model	Part Number	Description
RP-SMA to N, 10' cable	11865-010	10' cable connects TD200/TWIG-e/TWIG Repeater to lightning arrestor
RP-SMA to N, 20' cable	11865-020	20' cable connects TD200/TWIG-e/TWIG Repeater to lightning arrestor
N to N, 20' cable	11996-020	20' cable connects antenna to lightning arrestor
N to N, 30' cable	11996-030	30' cable connects antenna to lightning arrestor
Lightning Arrestor	11997	Replacement lightning arrestor used in the antenna kits
Solar Charge Controller	12330	Replacement 12VDC charge controller for TD200 and Repeaters only
MC to Hub Cord Set	13264	8 Pole Ethernet Cord Set (from MC Controller to Hub)
Wire Connector	10145	Compression connector for stranded wire. Gel filled.