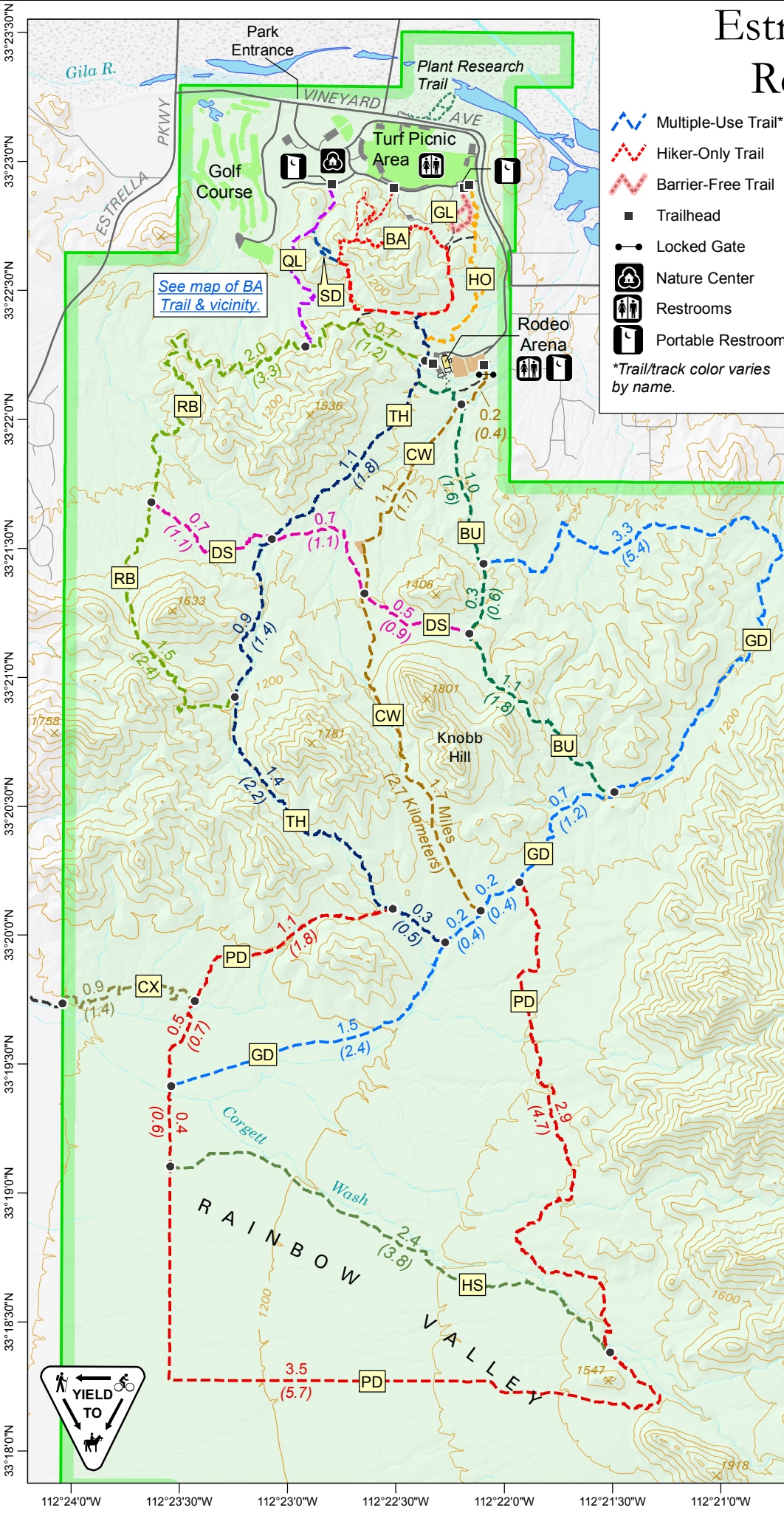


Estrella Mountain Regional Park



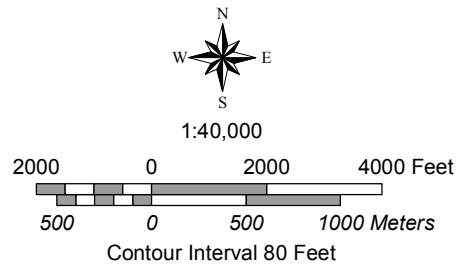
- Multiple-Use Trail*
 - Hiker-Only Trail
 - Barrier-Free Trail
 - Trailhead
 - Locked Gate
 - Nature Center
 - Restrooms
 - Portable Restroom
- *Trail/track color varies by name.

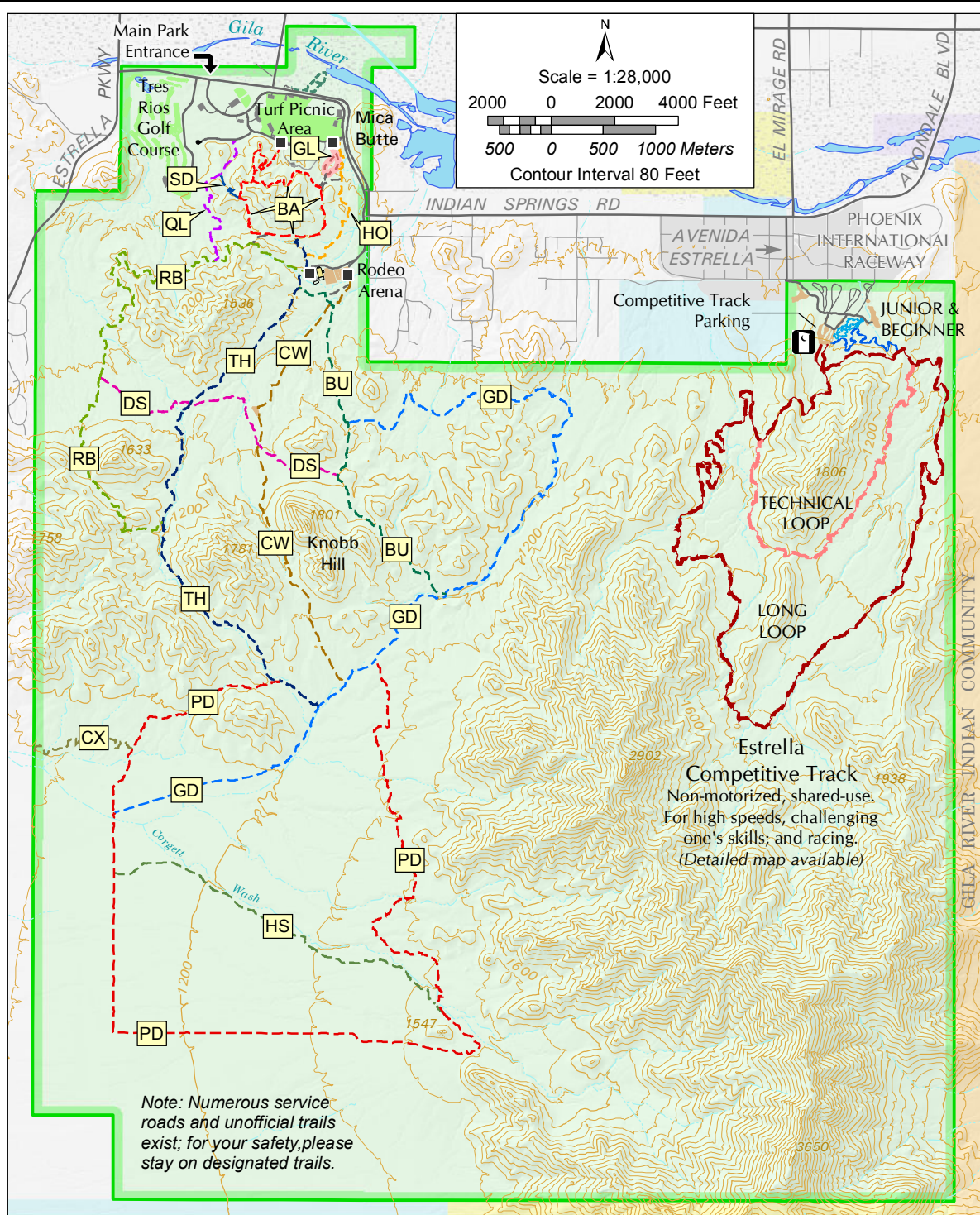
Trail Code	Trail Name	Length Mi	Length (Km)	Use	Rating
BA	Baseline	2.6*	(4.2)*	H,M	
BU	Butterfield (front)†	0.8	(1.2)	M	
BU	Butterfield (back)†	1.3	(2.3)	M	
CW	Coldwater	2.9	(4.7)	M	
CX	Crossover	0.9	(1.4)	M	
DS	Dysart	1.9	(3.1)	M	
GD	Gadsden	6.0	(9.6)	M	
GL	Gila	0.5*	(0.7)*	BF	
HS	Homestead	2.4	(3.8)	M	
HO	Horseshoe	1.0	(1.7)	M	
PD	Pedersen	8.4	(13.4)	M	
QL	Quail	1.0	(1.6)	M	
RB	Rainbow Valley	4.2	(6.7)	M	
SD	Saddle	0.3	(0.4)	M	
TH	Toothaker	3.9	(6.4)	M	

Use
M = Multiple Use (all non-motorized access allowed)
H = Hike Only
BF = Hike Only/Barrier-Free

Rating
 Easiest
 Easy
 Moderate
 Moderate - Difficult

- Lengths shown above are one-way unless indicated by * for round-trip hiking distance from trailheads; map shows only segment lengths.
- Lengths on map are for segments between trail junctions (●), or junction and trailhead.
- Due to rounding, segment lengths on map may not add up to trail totals shown above.
- †Butterfield rating changes to Moderate at junction with Gadsden heading south.





Welcome to Estrella Mountain Regional Park

This 19,840-acre park features 65 acres of grass with ramadas, picnic tables, grills, restrooms, playgrounds, lighted ball fields, an 18-hole golf course, and a rodeo arena. It also includes miles of trails and a competitive track.

Park Rules

PLEASE OBSERVE PARK RULES! They are posted throughout the park on information boards and are available upon request.

Nature Center

The new **Nature Center** includes the park office, animal exhibits, interpretive displays, educational materials, meeting rooms, and a retail area. It is available for events.

Picnicking

Estrella Park's large Turf Area offers **9 ramadas** for large group picnics, weddings, and parties. A separate map of the Turf Area with information is available.

Other Recreational Facilities

An **amphitheater** has a stage and seating for hundreds. It may be reserved for activities including weddings, church gatherings and scout events. Two **baseball fields** can be reserved for teams or for a large group wanting to picnic and play baseball. A large lighted **rodeo arena**, including bucking and roping chutes and seating for 1,000 is also available by reservation. Reservations for facilities can be made by calling the Park Office at (623) 932-3811. A special-use permit may be required.

Tres Rios Golf Course: (623) 932-3714, www.estrella-golf.com

Camping

The Park offers seven developed **RV sites** near the rodeo arena. Each has a large parking area to accommodate 45-foot RVs, with water and electrical hook-ups, picnic table and barbecue fire ring. All sites are first-come, first-served. Call the park office for use and reservation information.

Note: Numerous service roads and unofficial trails exist; for your safety, please stay on designated trails.

Hours of Operation and Contacts

Estrella Mountain Regional Park is open 6 a.m. to 8 p.m. Sun – Thurs and 10 p.m. Fri & Sat. A per-vehicle entry fee is required. Please use the self-pay station when the entrance booth is not staffed. For further information please contact the Park Office.

Mailing Address:
Estrella Mountain Regional Park
14805 West Vineyard Avenue
Goodyear, AZ 85338
Telephone: (623) 932-3811
E-mail: estrellapark@mail.maricopa.gov
Web site: <http://www.maricopa.gov/parks/estrella/>

Like us on Facebook
[EstrellaMtnPark](#)
Follow us on Twitter
[@MCParks](#)

Telephone for reservations: (602) 506-2930
E-mail: maricopacountyparks@mail.maricopa.gov

YouTube www.youtube.com/MaricopaCountyParks

Group camping near the **Turf Area** is permitted up to 14 nights, for a fee. RV clubs can reserve a group ramada and park in nearby lots. Electricity is provided at the ramadas for small appliances only. Scout, youth and other groups can camp at one of the ramadas or at the Navy Area, located on the east end of the turf area. Please check with park office for irrigation schedules. Picnic tables, barbecues and fire pits are provided. Trailheads are nearby. There are restrooms with flush toilets. Showers are not available.

Trails

Estrella Park offers some 40 miles of trails for hiking, mountain biking, and horseback riding and range in difficulty from easy to strenuous. The **Baseline Trail** is a popular 2.3-mile loop trail. The **Gila Trail** is a half-mile barrier-free trail just south of the Navy Area of the park.

Note: The park's terrain is rugged desert and sandy washes. Travel can be arduous if you are not prepared. Always carry plenty of water, use protection from the sun, and let someone know where you are going. Please enter the Maricopa County Sheriff's Office phone number of (602)-876-1011 into your cell phone prior to starting a hike, for use in case of emergency.

Competitive Track

The **Competitive Track** is designed to provide challenging, strenuous, and high-speed outdoor recreation for individuals, groups, and events. The tracks are shared-use, one-way only, and are designed for cross-country runners and joggers, fast bicyclists and racers, and trotting/galloping equestrians and endurance riders. A separate, detailed map is available.